

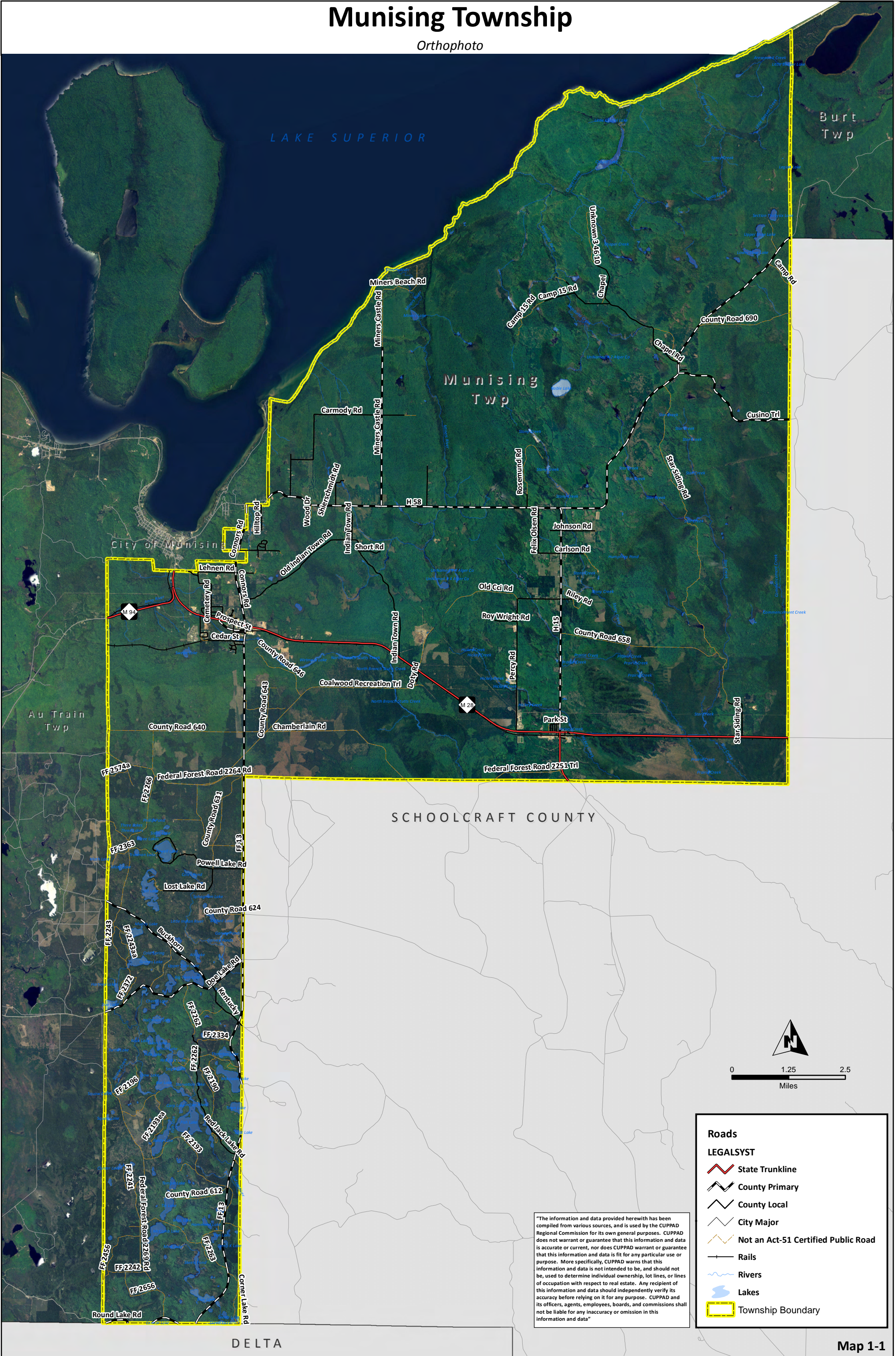
## **Appendix A**

### **Maps**

- 1-1 Orthophoto
- 7-1 Act 51
- 7-2 MDOT National Functional Classification (NFC)
- 8-1 Bedrock Geology
- 8-2 Soils
- 8-3 Surface Topography
- 8-4 Base Map
- 9-1 Land Use
- 9-2 National Land Cover Data 2001 (NLCD)
- 9-3 Generalized Land Ownership
- 11-1 Future Land Use

# Munising Township

Orthophoto



"The information and data provided herewith has been compiled from various sources, and is used by the CUPPAD Regional Commission for its own general purposes. CUPPAD does not warrant or guarantee that this information and data is accurate or current, nor does CUPPAD warrant or guarantee that this information and data is fit for any particular use or purpose. More specifically, CUPPAD warns that this information and data is not intended to be, and should not be, used to determine individual ownership, lot lines, or lines of occupation with respect to real estate. Any recipient of this information and data should independently verify its accuracy before relying on it for any purpose. CUPPAD and its officers, agents, employees, boards, and commissions shall not be liable for any inaccuracy or omission in this information and data"

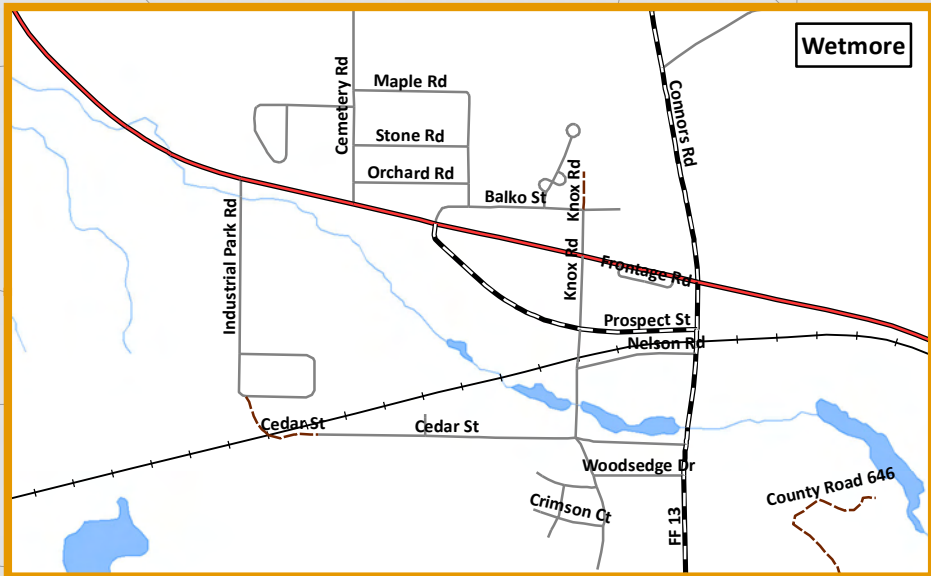
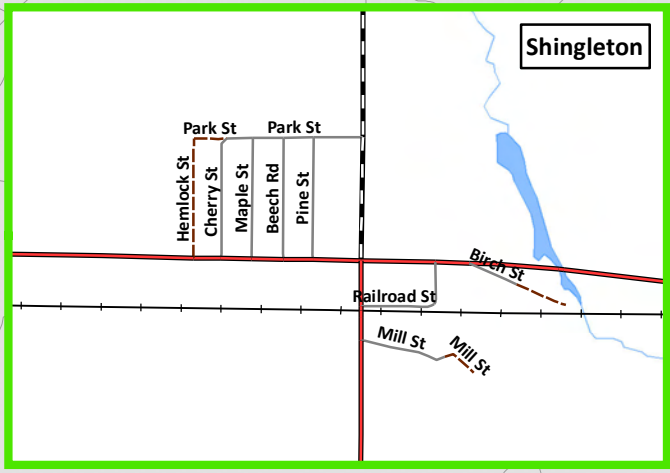
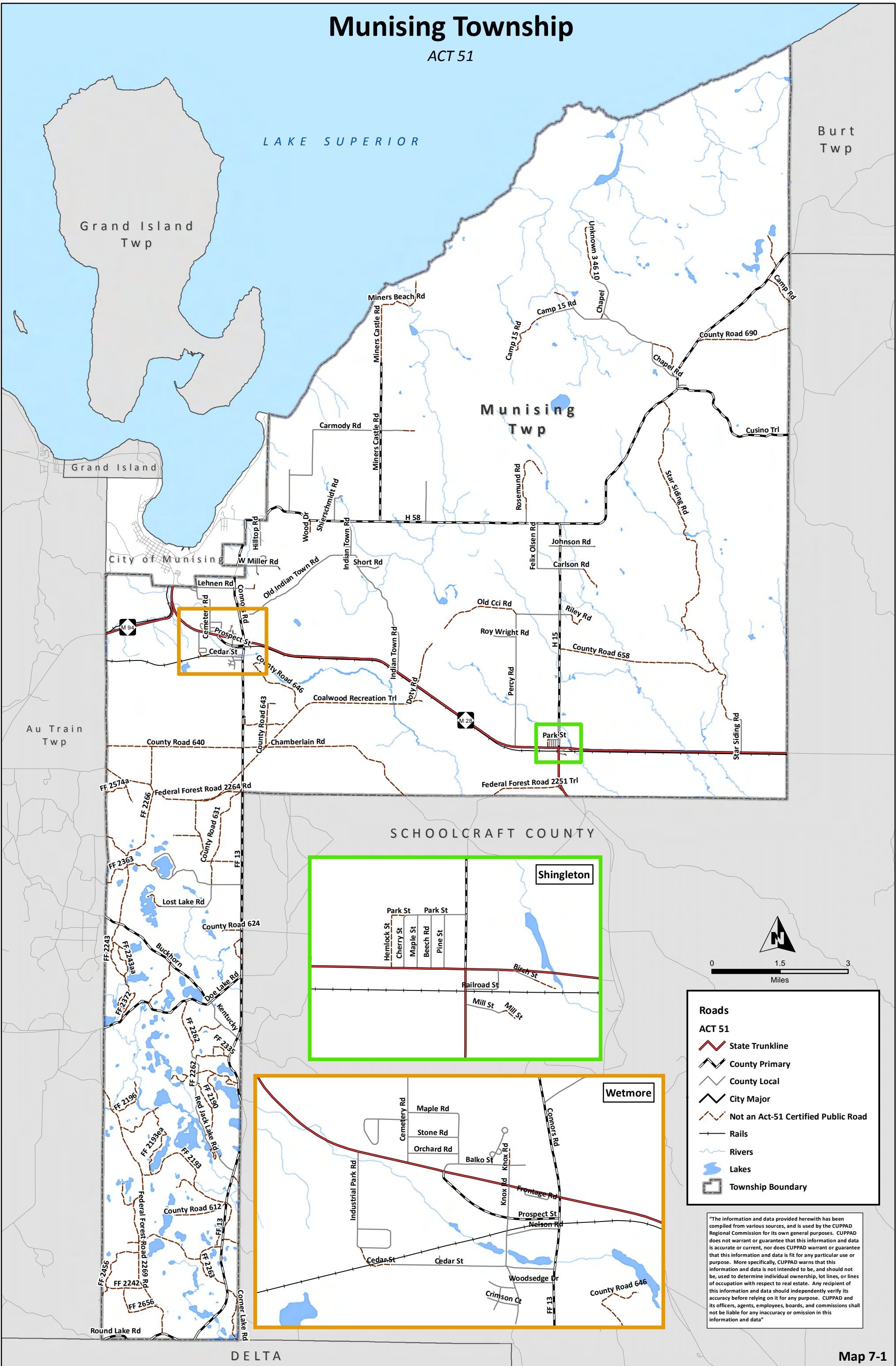
**Roads**

**LEGALSYST**

- State Trunkline
- County Primary
- County Local
- City Major
- Not an Act-51 Certified Public Road
- Rails
- Rivers
- Lakes
- Township Boundary

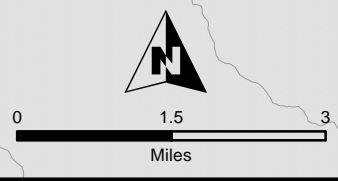
# Munising Township

ACT 51



**Roads**

- ACT 51 State Trunkline
- County Primary
- County Local
- City Major
- Not an Act-51 Certified Public Road
- Rails
- Rivers
- Lakes
- Township Boundary



"The information and data provided herewith has been compiled from various sources, and is used by the CUPPAD Regional Commission for its own general purposes. CUPPAD does not warrant or guarantee that this information and data is accurate or current, nor does CUPPAD warrant or guarantee that this information and data is fit for any particular use or purpose. More specifically, CUPPAD warns that this information and data is not intended to be, and should not be, used to determine individual ownership, lot lines, or lines of occupation with respect to real estate. Any recipient of this information and data should independently verify its accuracy before relying on it for any purpose. CUPPAD and its officers, agents, employees, boards, and commissions shall not be liable for any inaccuracy or omission in this information and data"

# Munising Township

MDOT National Functional Classification (NFC)

LAKE SUPERIOR

Burt Twp

Grand Island Twp

Munising Twp

City of Munising

SCHOOLCRAFT COUNTY

Au Train Twp

Shingleton









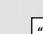
Wetmore

DELTA

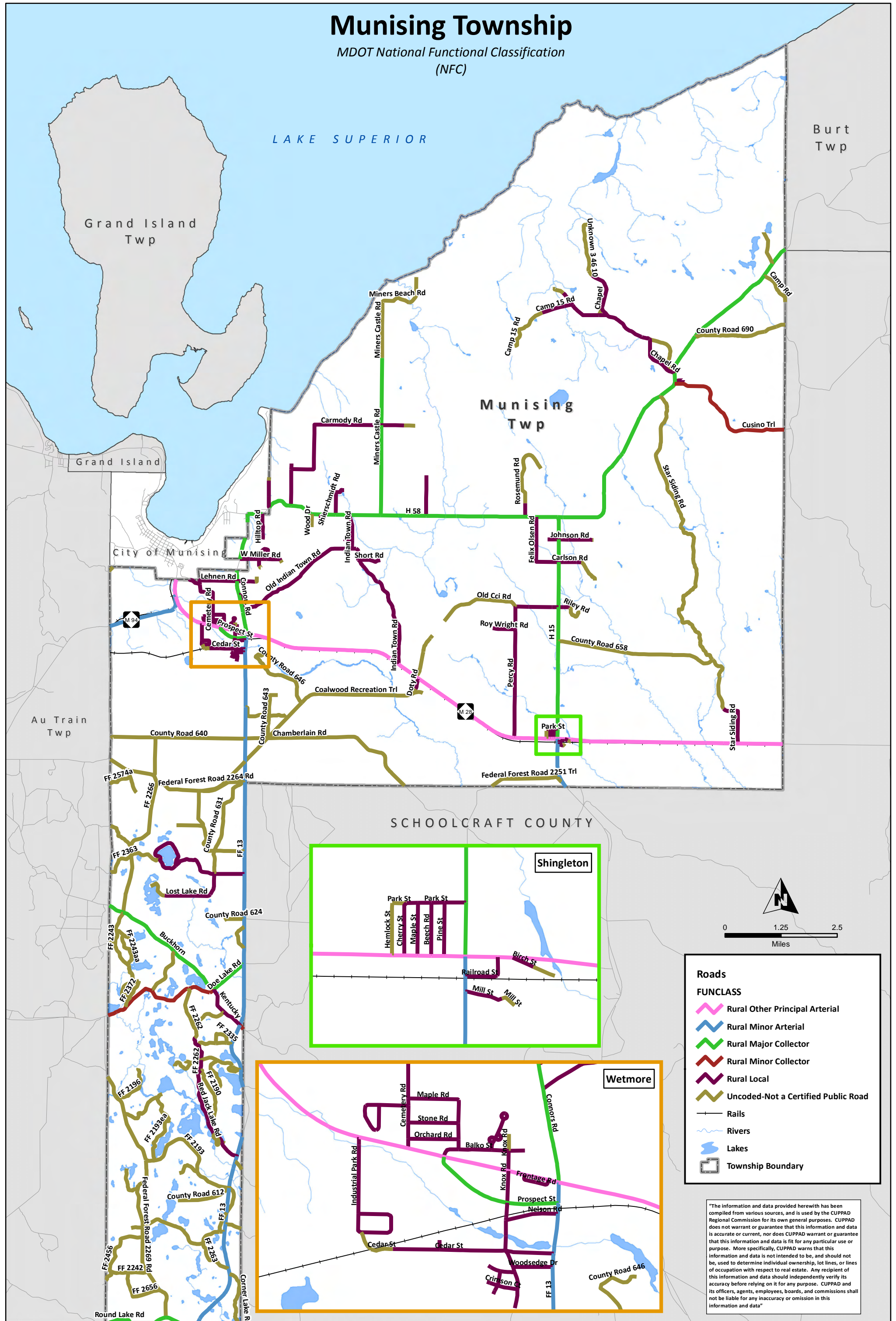
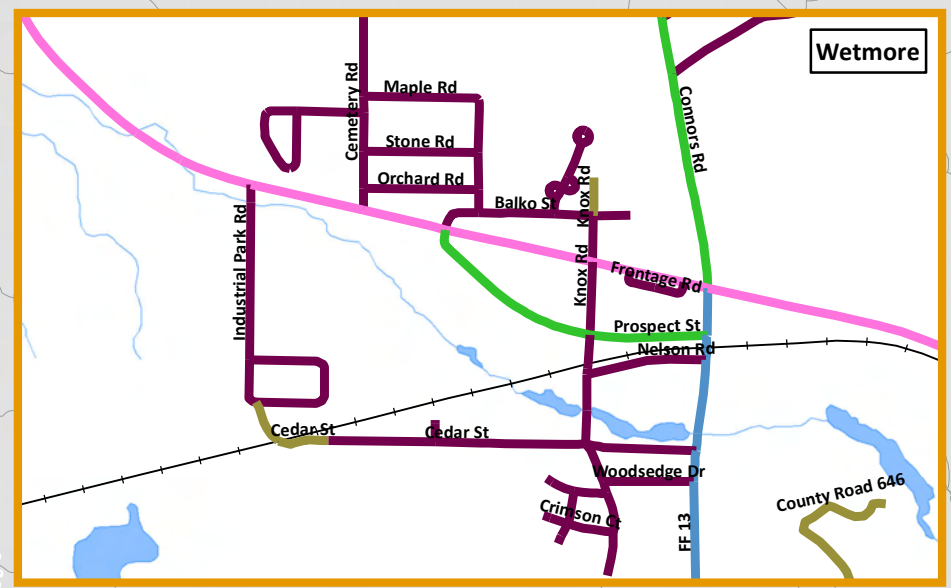
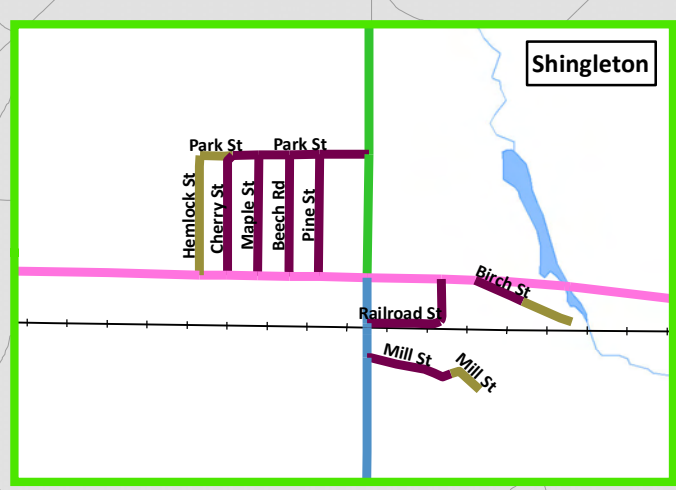
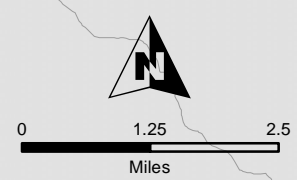
Map 7-2

**Roads**

**FUNCLASS**

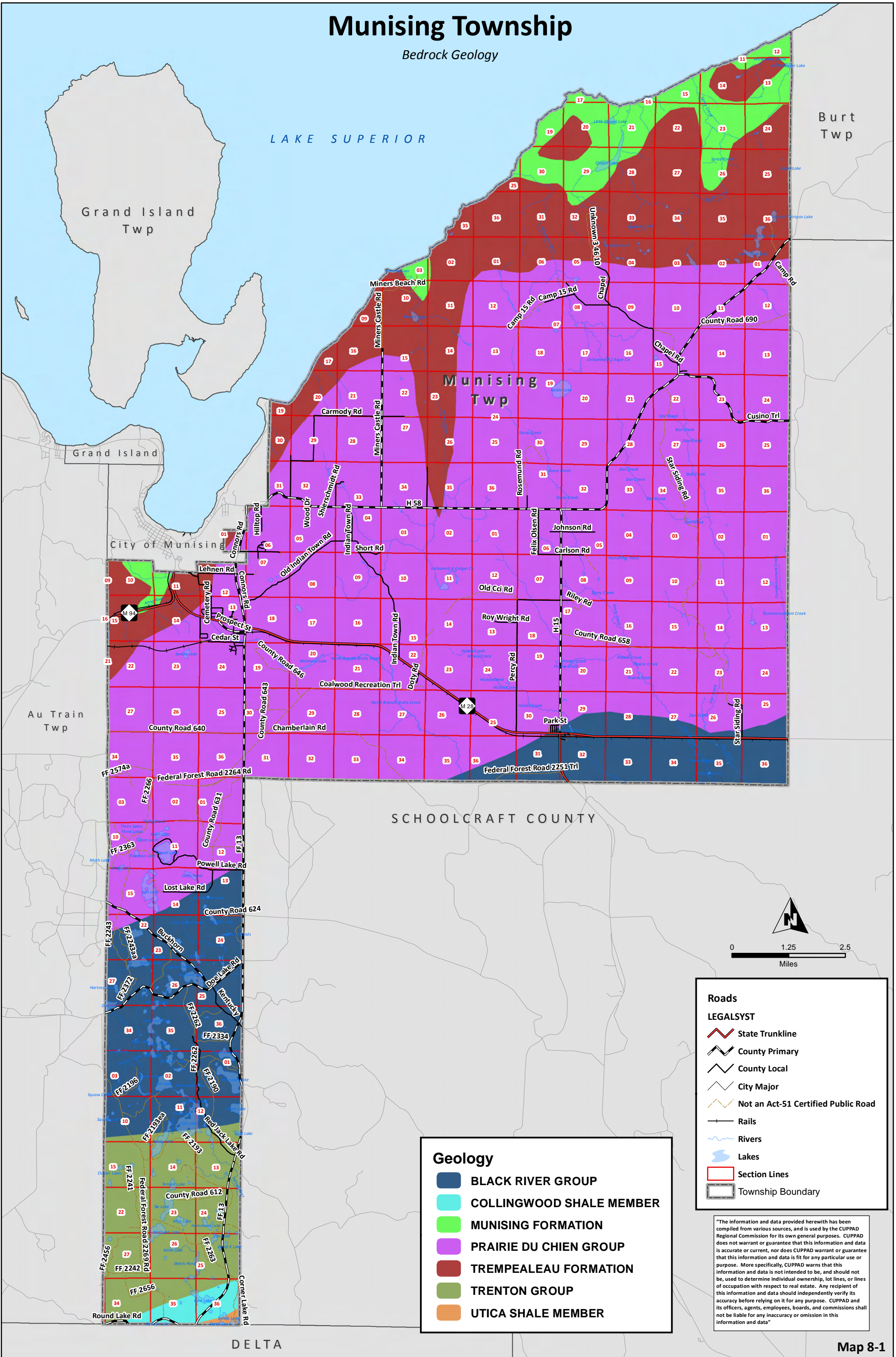
-  Rural Other Principal Arterial
-  Rural Minor Arterial
-  Rural Major Collector
-  Rural Minor Collector
-  Rural Local
-  Uncoded-Not a Certified Public Road
-  Rails
-  Rivers
-  Lakes
-  Township Boundary

"The information and data provided herewith has been compiled from various sources, and is used by the CUPPAD Regional Commission for its own general purposes. CUPPAD does not warrant or guarantee that this information and data is accurate or current, nor does CUPPAD warrant or guarantee that this information and data is fit for any particular use or purpose. More specifically, CUPPAD warns that this information and data is not intended to be, and should not be, used to determine individual ownership, lot lines, or lines of occupation with respect to real estate. Any recipient of this information and data should independently verify its accuracy before relying on it for any purpose. CUPPAD and its officers, agents, employees, boards, and commissions shall not be liable for any inaccuracy or omission in this information and data"



# Munising Township

Bedrock Geology



SCHOOLCRAFT COUNTY

DELTA

Burt Twp

Grand Island Twp

Au Train Twp

**Roads**

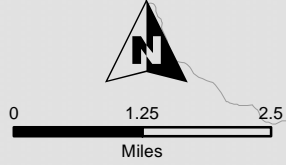
**LEGALSYST**

- State Trunkline
- County Primary
- County Local
- City Major
- Not an Act-51 Certified Public Road
- Rails
- Rivers
- Lakes
- Section Lines
- Township Boundary

**Geology**

- BLACK RIVER GROUP
- COLLINGWOOD SHALE MEMBER
- MUNISING FORMATION
- PRAIRIE DU CHIEN GROUP
- TREMPLEALEAU FORMATION
- TRENTON GROUP
- UTICA SHALE MEMBER

"The information and data provided herewith has been compiled from various sources, and is used by the CUPPAD Regional Commission for its own general purposes. CUPPAD does not warrant or guarantee that this information and data is accurate or current, nor does CUPPAD warrant or guarantee that this information and data is fit for any particular use or purpose. More specifically, CUPPAD warns that this information and data is not intended to be, and should not be, used to determine individual ownership, lot lines, or lines of occupation with respect to real estate. Any recipient of this information and data should independently verify its accuracy before relying on it for any purpose. CUPPAD and its officers, agents, employees, boards, and commissions shall not be liable for any inaccuracy or omission in this information and data"



# Munising Township

Soils

LAKE SUPERIOR

Burt Twp

Grand Island Twp

Grand Island

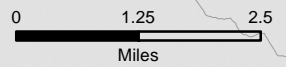
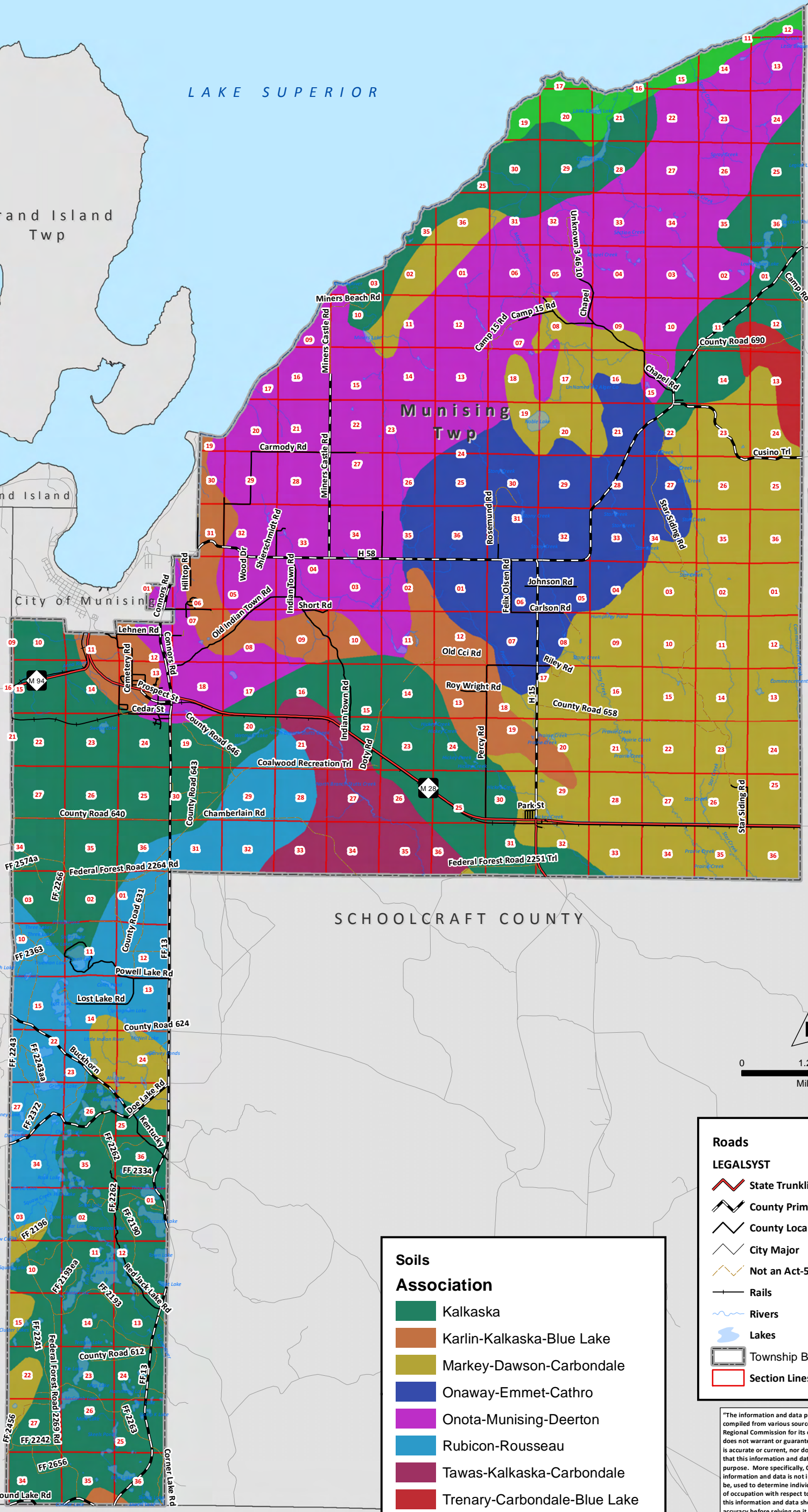
Munising Twp

City of Munising

Au Train Twp

SCHOOLCRAFT COUNTY

DELTA



### Roads

#### LEGALSYST

- State Trunkline
- County Primary
- County Local
- City Major
- Not an Act-51 Certified Public Road
- Rails
- Rivers
- Lakes
- Township Boundary
- Section Lines

### Soils

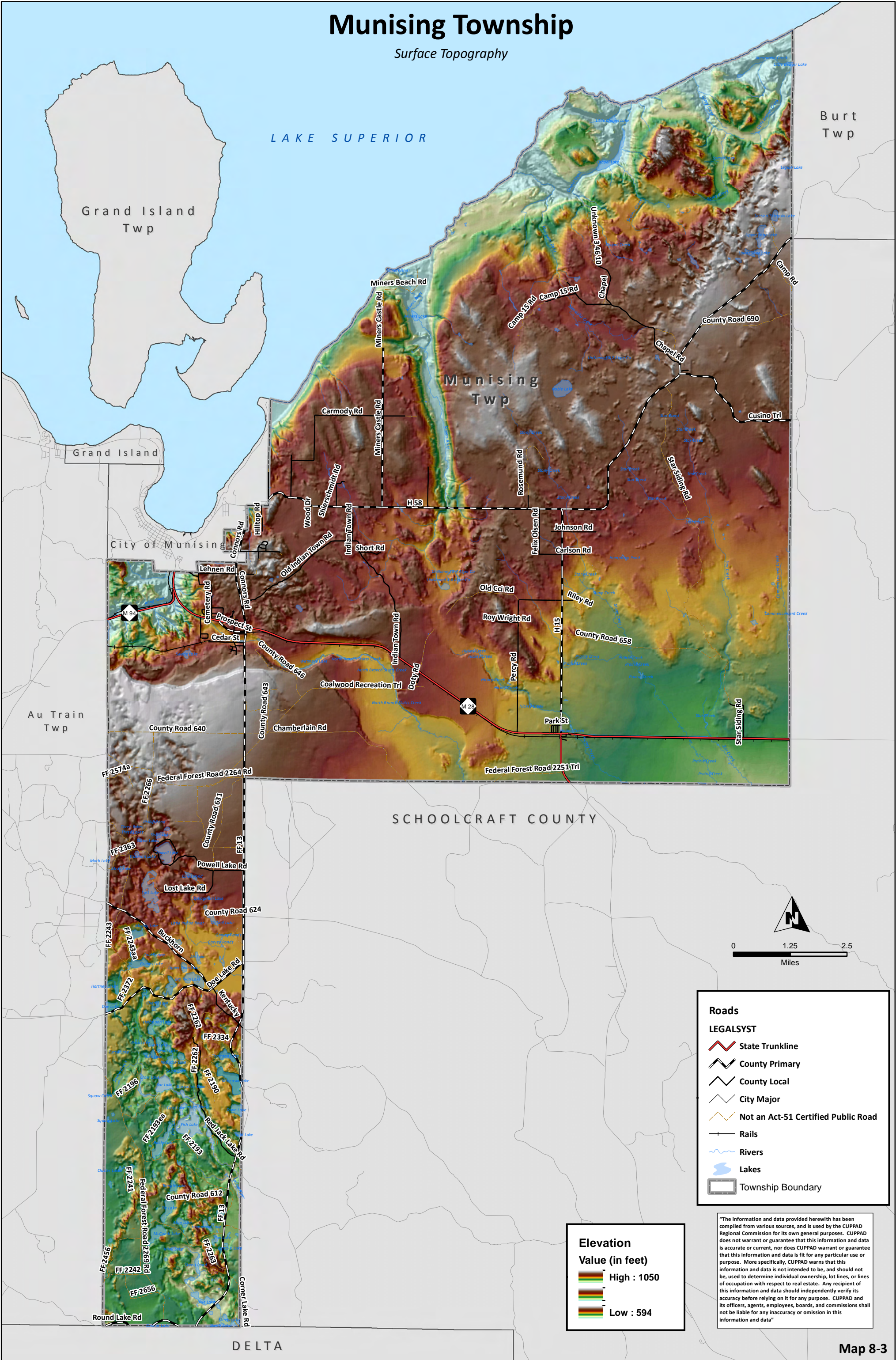
#### Association

- Kalkaska
- Karlin-Kalkaska-Blue Lake
- Markey-Dawson-Carbondale
- Onaway-Emmet-Cathro
- Onota-Munising-Deerton
- Rubicon-Rousseau
- Tawas-Kalkaska-Carbondale
- Trenary-Carbondale-Blue Lake
- Wallace-Shelldrake-Roscommon

"The information and data provided herewith has been compiled from various sources, and is used by the CUPPAD Regional Commission for its own general purposes. CUPPAD does not warrant or guarantee that this information and data is accurate or current, nor does CUPPAD warrant or guarantee that this information and data is fit for any particular use or purpose. More specifically, CUPPAD warns that this information and data is not intended to be, and should not be, used to determine individual ownership, lot lines, or lines of occupation with respect to real estate. Any recipient of this information and data should independently verify its accuracy before relying on it for any purpose. CUPPAD and its officers, agents, employees, boards, and commissions shall not be liable for any inaccuracy or omission in this information and data"

# Munising Township

Surface Topography



**Roads**

**LEGALSYST**

- State Trunkline
- County Primary
- County Local
- City Major
- Not an Act-51 Certified Public Road
- Rails
- Rivers
- Lakes
- Township Boundary

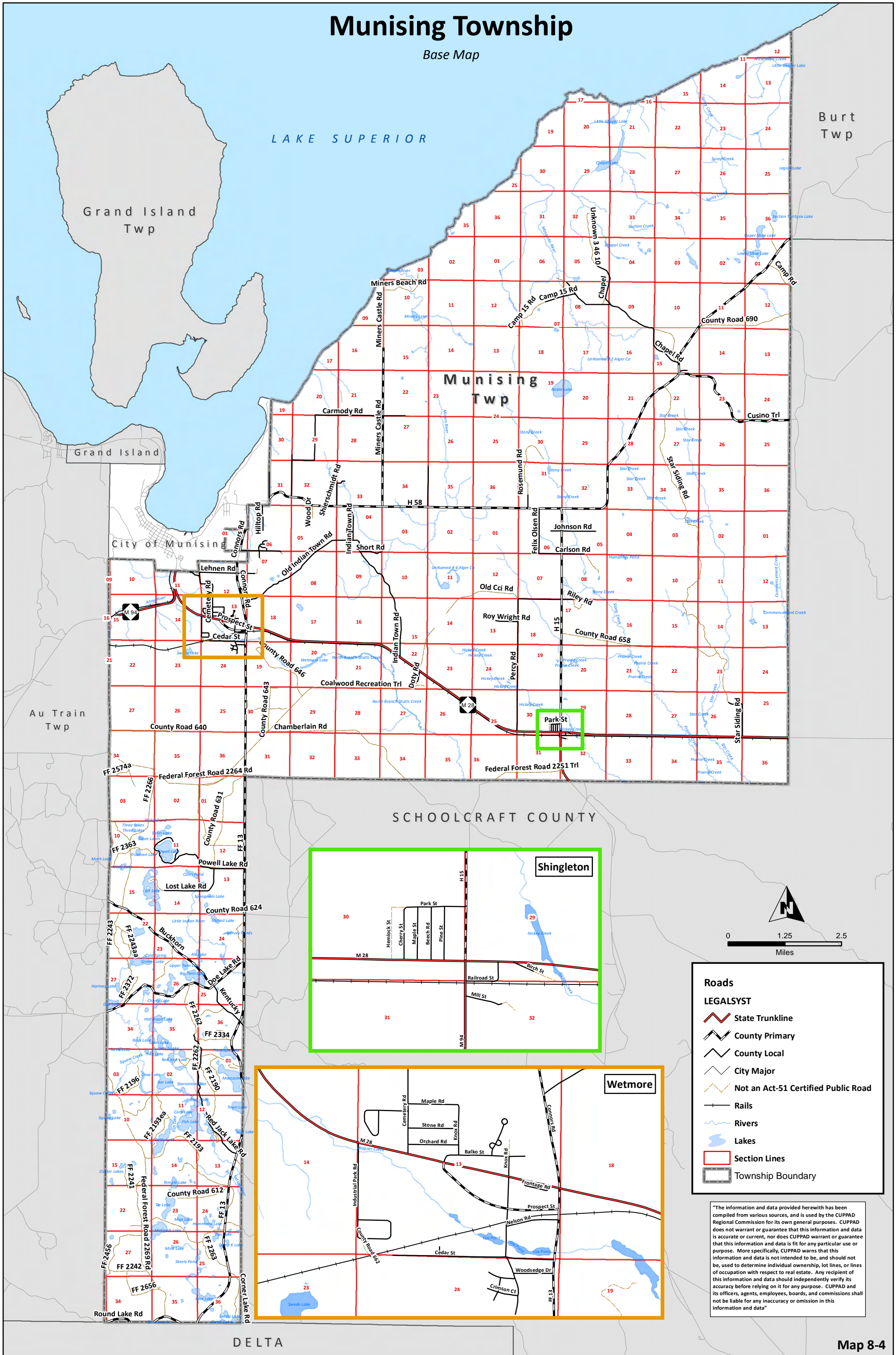
**Elevation**  
Value (in feet)

- High : 1050
- Low : 594

"The information and data provided herewith has been compiled from various sources, and is used by the CUPPAD Regional Commission for its own general purposes. CUPPAD does not warrant or guarantee that this information and data is accurate or current, nor does CUPPAD warrant or guarantee that this information and data is fit for any particular use or purpose. More specifically, CUPPAD warns that this information and data is not intended to be, and should not be, used to determine individual ownership, lot lines, or lines of occupation with respect to real estate. Any recipient of this information and data should independently verify its accuracy before relying on it for any purpose. CUPPAD and its officers, agents, employees, boards, and commissions shall not be liable for any inaccuracy or omission in this information and data"

# Munising Township

Base Map



Burt Twp

Grand Island Twp

Munising Twp

SCHOOLCRAFT COUNTY

Au Train Twp

Shingleton

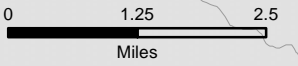
Wetmore

**Roads**

**LEGALSYST**

- State Trunkline
- County Primary
- County Local
- City Major
- Not an Act-51 Certified Public Road
- Rails
- Rivers
- Lakes
- Section Lines
- Township Boundary

"The information and data provided herewith has been compiled from various sources, and is used by the CUPPAD Regional Commission for its own general purposes. CUPPAD does not warrant or guarantee that this information and data is accurate or current, nor does CUPPAD warrant or guarantee that this information and data is fit for any particular use or purpose. More specifically, CUPPAD warns that this information and data is not intended to be, and should not be, used to determine individual ownership, lot lines, or lines of occupation with respect to real estate. Any recipient of this information and data should independently verify its accuracy before relying on it for any purpose. CUPPAD and its officers, agents, employees, boards, and commissions shall not be liable for any inaccuracy or omission in this information and data"

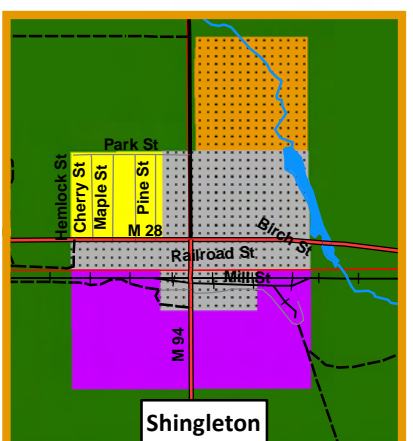
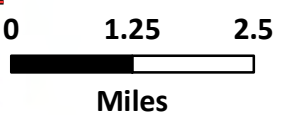
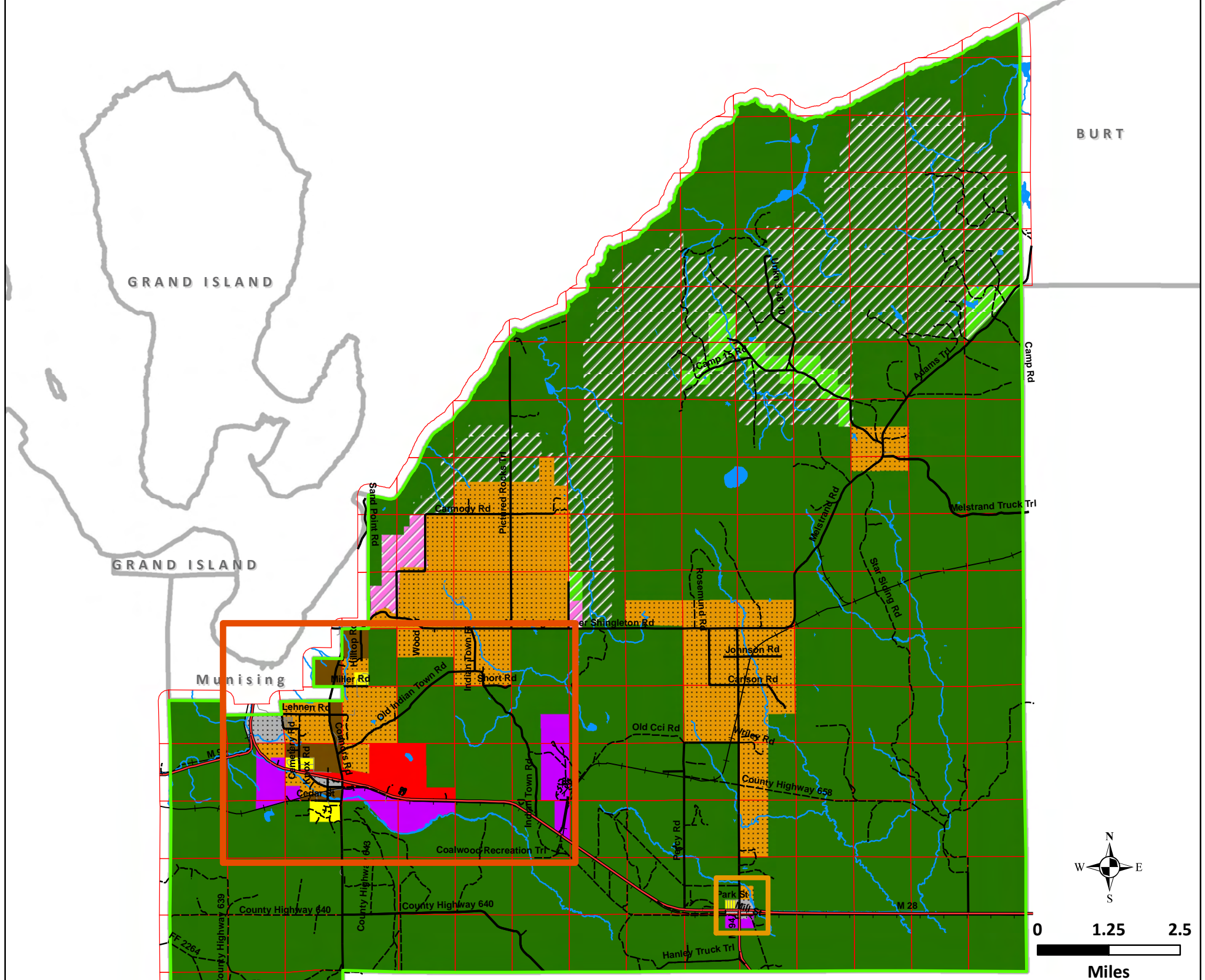


DELTA



# Munising Township

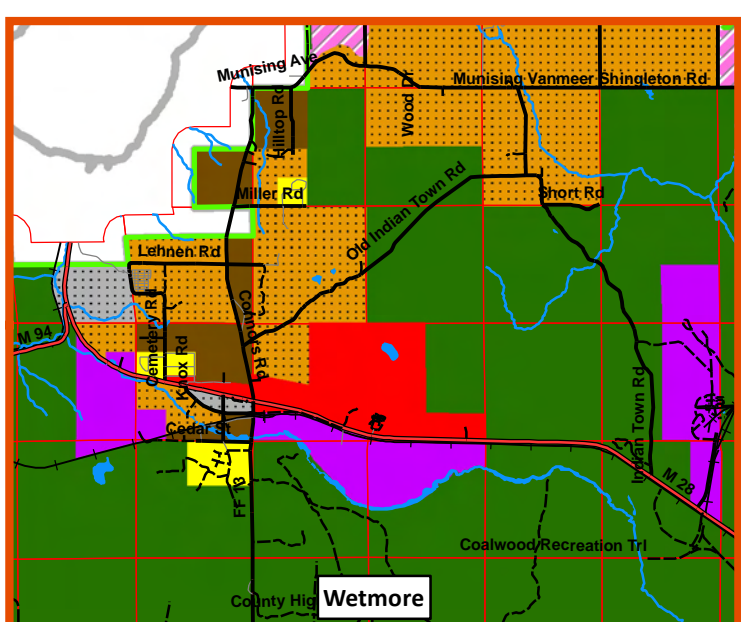
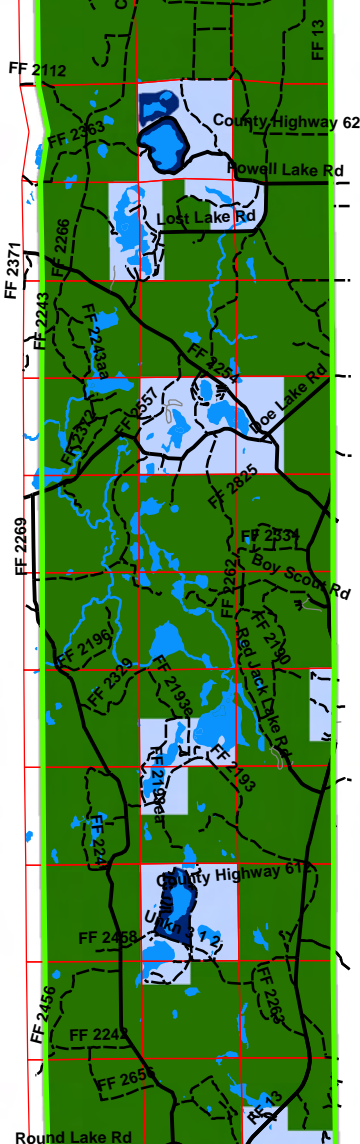
## Land Use



Shingleton

"The information and data provided herewith has been compiled from various sources, and is used by the CUPPAD Regional Commission for its own general purposes. CUPPAD does not warrant or guarantee that this information and data is accurate or current, nor does CUPPAD warrant or guarantee that this information and data is fit for any particular use or purpose. More specifically, CUPPAD warns that this information and data is not intended to be, and should not be, used to determine individual ownership, lot lines, or lines of occupation with respect to real estate. Any recipient of this information and data should independently verify its accuracy before relying on it for any purpose. CUPPAD and its officers, agents, employees, boards, and commissions shall not be liable for any inaccuracy or omission in this information and data"

- Highways
- County Roads
- Local Roads
- Two-Track
- Rails
- Rivers
- Lakes
- Section Lines
- Township Boundary
- Alger Township Boundaries

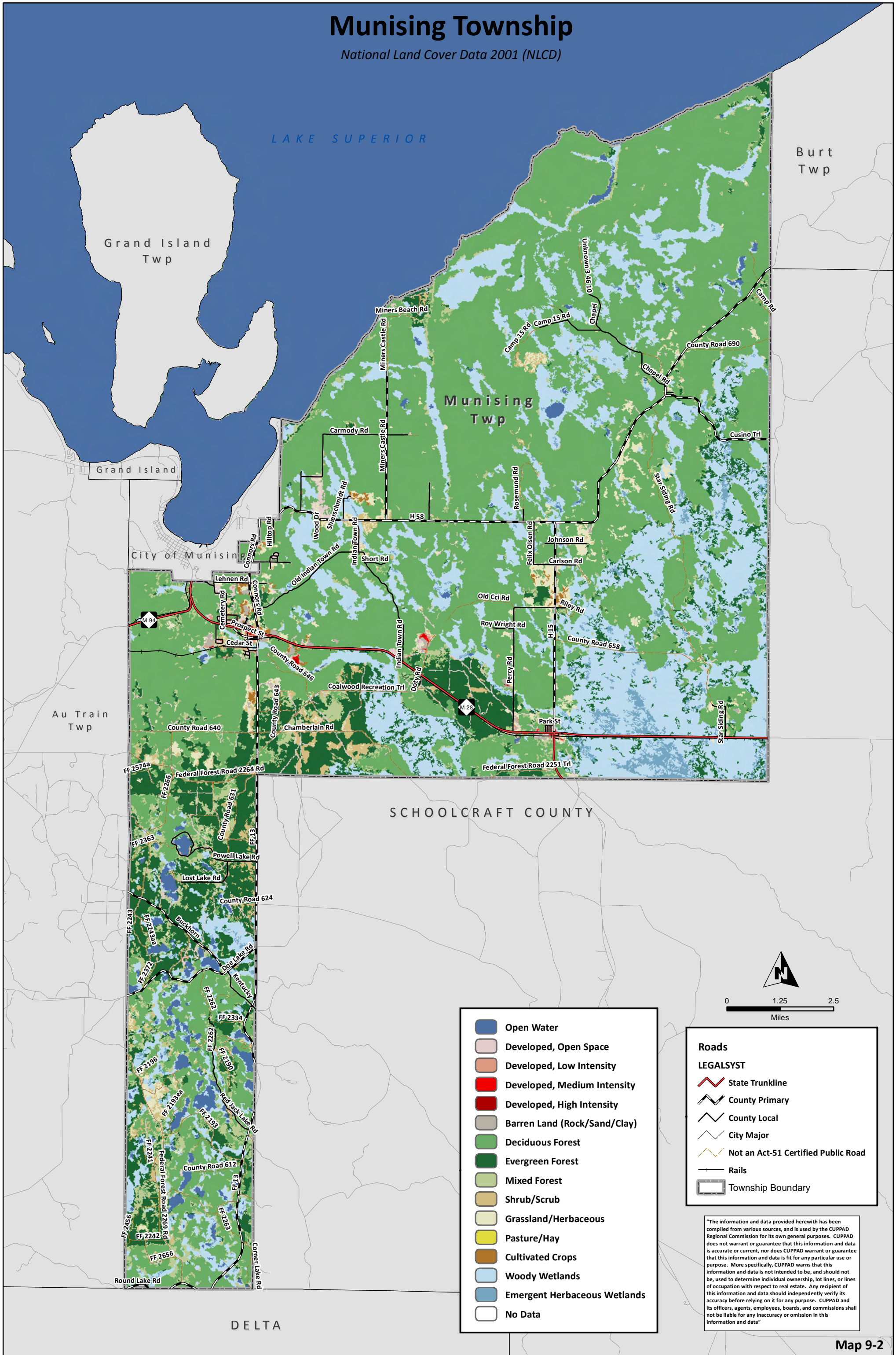


Wetmore

- Land Use Usage**
- COMMERCIAL
  - INDUSTRIAL
  - LS/R-1
  - LS/R-2
  - RESIDENTIAL-1
  - RESIDENTIAL-2
  - RURAL RESIDENTIAL
  - RESOURCE PRODUCTION
  - TOWN DEVELOPMENT
  - RURAL RESIDENTIAL (IBZ)
  - RESOURCE MANAGEMENT (IBZ)
  - SEASONAL DWELLING / TIMBER PRODUCTION (IBZ)

# Munising Township

National Land Cover Data 2001 (NLCD)



	Open Water
	Developed, Open Space
	Developed, Low Intensity
	Developed, Medium Intensity
	Developed, High Intensity
	Barren Land (Rock/Sand/Clay)
	Deciduous Forest
	Evergreen Forest
	Mixed Forest
	Shrub/Scrub
	Grassland/Herbaceous
	Pasture/Hay
	Cultivated Crops
	Woody Wetlands
	Emergent Herbaceous Wetlands
	No Data

**Roads**

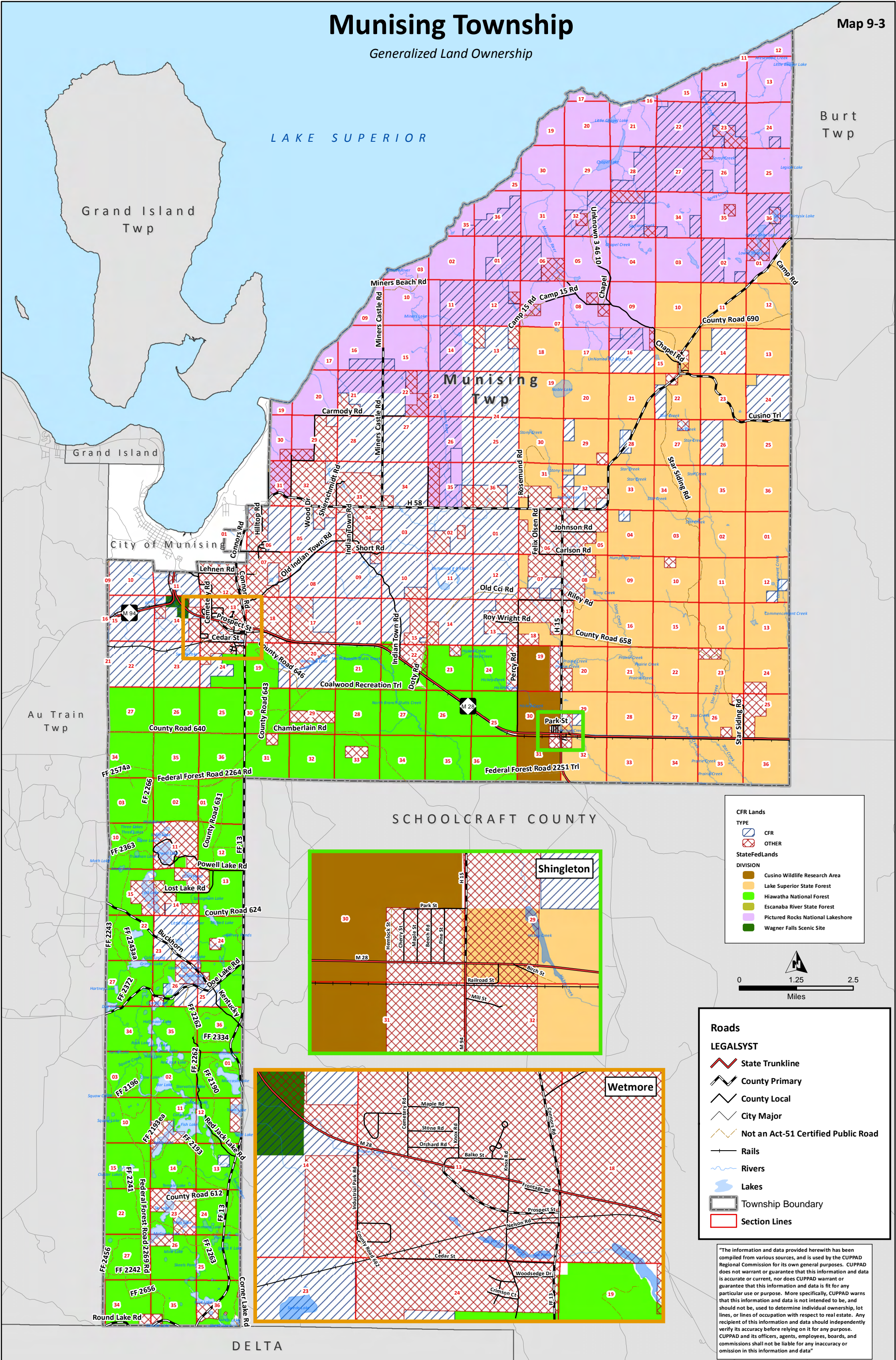
**LEGALSYST**

- State Trunkline
- County Primary
- County Local
- City Major
- Not an Act-51 Certified Public Road
- Rails
- Township Boundary

"The information and data provided herewith has been compiled from various sources, and is used by the CUPPAD Regional Commission for its own general purposes. CUPPAD does not warrant or guarantee that this information and data is accurate or current, nor does CUPPAD warrant or guarantee that this information and data is fit for any particular use or purpose. More specifically, CUPPAD warns that this information and data is not intended to be, and should not be, used to determine individual ownership, lot lines, or lines of occupation with respect to real estate. Any recipient of this information and data should independently verify its accuracy before relying on it for any purpose. CUPPAD and its officers, agents, employees, boards, and commissions shall not be liable for any inaccuracy or omission in this information and data"

# Munising Township

Generalized Land Ownership



**CFR Lands**

TYPE

- CFR
- OTHER

**StateFedLands**

DIVISION

- Cusino Wildlife Research Area
- Lake Superior State Forest
- Hiawatha National Forest
- Escanaba River State Forest
- Pictured Rocks National Lakeshore
- Wagner Falls Scenic Site



**Roads**

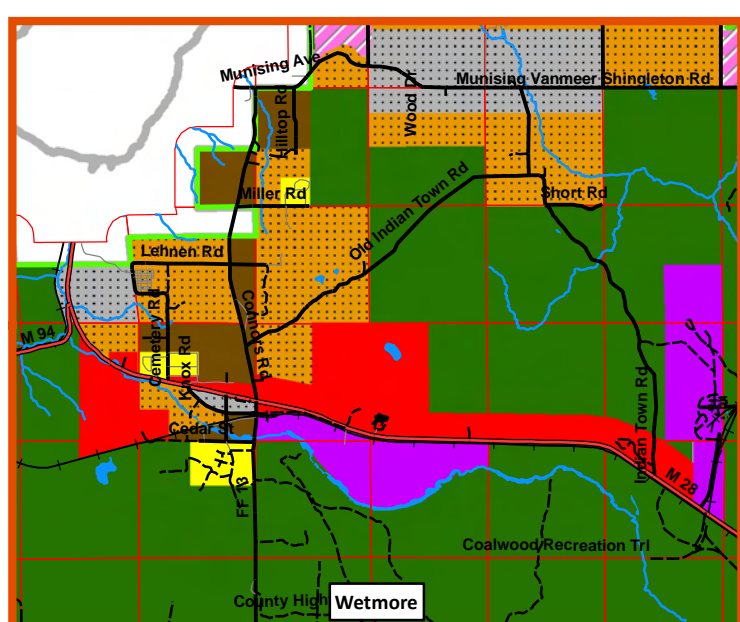
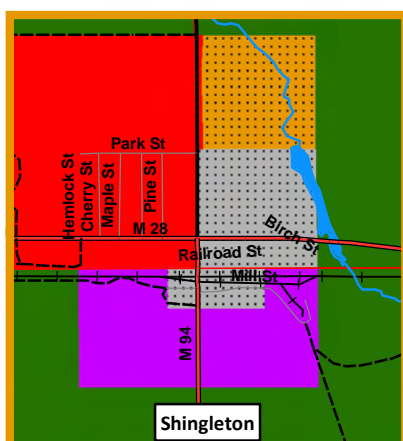
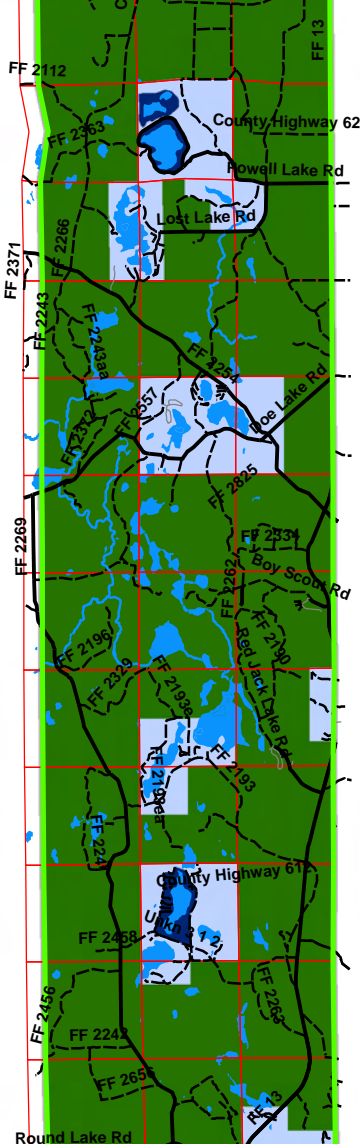
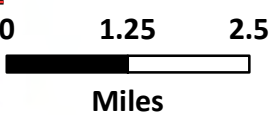
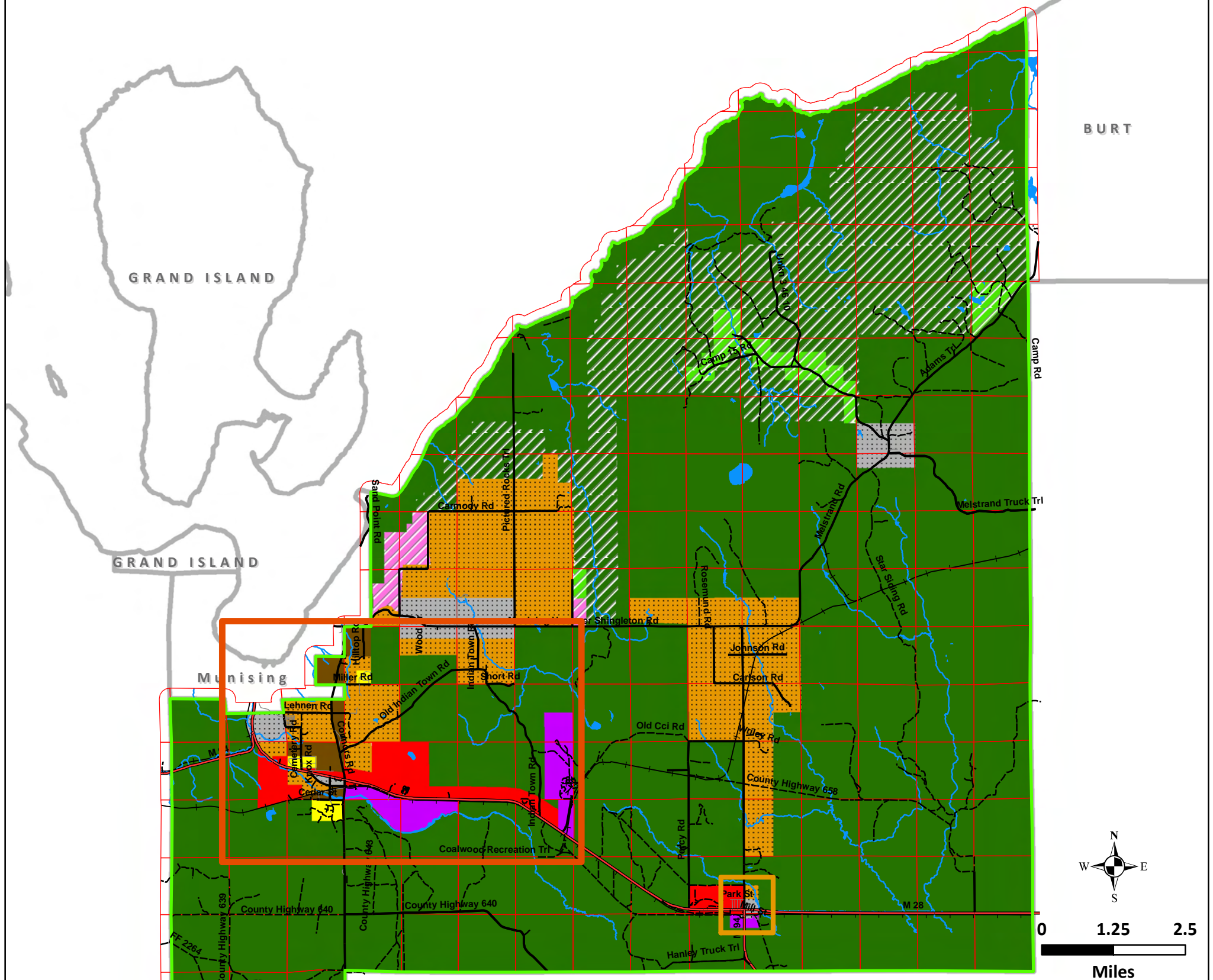
**LEGALSYST**

- State Trunkline
- County Primary
- County Local
- City Major
- Not an Act-51 Certified Public Road
- Rails
- Rivers
- Lakes
- Township Boundary
- Section Lines

"The information and data provided herewith has been compiled from various sources, and is used by the CUPPAD Regional Commission for its own general purposes. CUPPAD does not warrant or guarantee that this information and data is accurate or current, nor does CUPPAD warrant or guarantee that this information and data is fit for any particular use or purpose. More specifically, CUPPAD warns that this information and data is not intended to be, and should not be, used to determine individual ownership, lot lines, or lines of occupation with respect to real estate. Any recipient of this information and data should independently verify its accuracy before relying on it for any purpose. CUPPAD and its officers, agents, employees, boards, and commissions shall not be liable for any inaccuracy or omission in this information and data"

# Munising Township

## Future Land Use



"The information and data provided herewith has been compiled from various sources, and is used by the CUPPAD Regional Commission for its own general purposes. CUPPAD does not warrant or guarantee that this information and data is accurate or current, nor does CUPPAD warrant or guarantee that this information and data is fit for any particular use or purpose. More specifically, CUPPAD warns that this information and data is not intended to be, and should not be, used to determine individual ownership, lot lines, or lines of occupation with respect to real estate. Any recipient of this information and data should independently verify its accuracy before relying on it for any purpose. CUPPAD and its officers, agents, employees, boards, and commissions shall not be liable for any inaccuracy or omission in this information and data"

- Township Boundary
- Highways
- County Roads
- Local Roads
- Two-Track
- Section Lines
- Rivers
- Lakes
- Alger Township Boundaries

- ### Future Land Use Usage
- COMMERCIAL
  - INDUSTRIAL
  - LS/R-1
  - LS/R-2
  - RESIDENTIAL-1
  - RESIDENTIAL-2
  - RURAL RESIDENTIAL
  - RESOURCE PRODUCTION
  - TOWN DEVELOPMENT
  - RURAL RESIDENTIAL (IBZ)
  - RESOURCE MANAGEMENT (IBZ)
  - SEASONAL DWELLING / TIMBER PRODUCTION (IBZ)